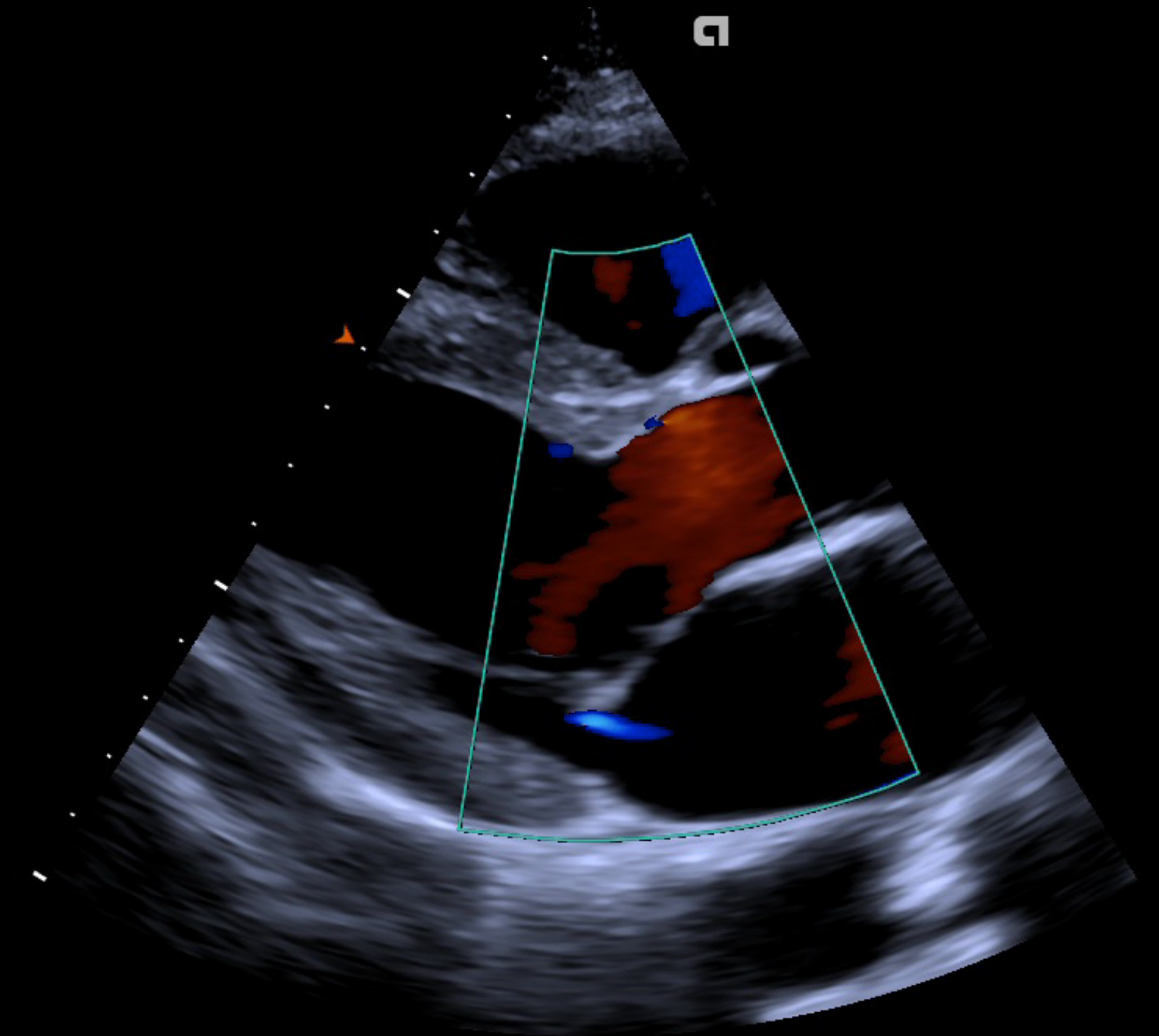
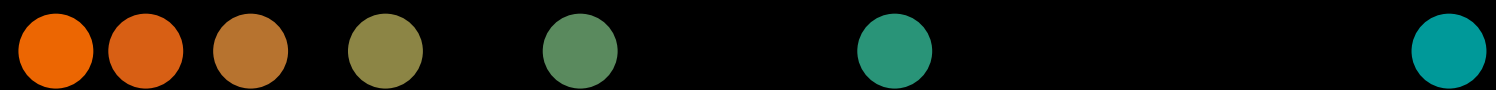


CV Edition

ACUSON Redwood Ultrasound System

Pushing the boundaries of imaging,
performance and value

siemens-healthineers.com/ultrasound/cardiovascular/acuson-redwood-cv



SIEMENS
Healthineers 

Globally, healthcare providers face an ongoing struggle for improved clinical outcomes against the constraints of tighter budgets.

Meeting the demand for early detection, diagnosis, and timely treatment of a variety of chronic diseases is tremendously challenging for a physician. Ultrasound imaging must

enable answers to a breadth of important clinical questions – fast.

Welcome ACUSON Redwood; pushing the boundaries of imaging, performance, and value – a solution for cardiology, offering a comprehensive suite of advanced applications.





Portability

Lightweight and portable

Bring precision imaging to more patients at the bedside with a lightweight, portable, highly functional, front or rear-handle system that is easy to move around.



Comprehensive suite of transducers

The ACUSON Redwood has a comprehensive suite of transducers, including TEE, adult, pediatric, neonatal echo and vascular imaging. Supporting a diverse range of clinical applications the ACUSON Redwood meets your growing cardiovascular needs.



Imaging that inspires confidence

Image quality and improved clinical outcomes have a direct correlation. Obtain high-performance and precision imaging working within the constraints of tight operational budgets.

Apical 4 chamber view with color flash suppression technology adjusts persistence relative to operator motion by reducing the amount of extraneous color speckle.

Differentiate true contractility from passive myocardial motion with tissue Doppler imaging.

Perform routine TEE exams to assess mitral valve morphology and physiology with the V5Ms transducer.



Smart workflow for greater efficiency

Improved workflow and efficiency by removing manual processes and reducing examination time.

AI-powered eSie¹ Measure workflow package enables 1-click cardiac measurements for 2D, M-mode, and Doppler, providing increased reproducibility and efficiency while minimizing keystrokes.

Using AI-powered technology, eSie Left Heart automatically identifies views and contours the left ventricle and left atrium while improving measurement reproducibility and efficiency of left ventricular and left atrial ejection fraction.

Spectral pulsed wave (PW) Doppler interrogation of the left ventricular outflow tract using AI-powered eSie Measure 1-click quantification reduces keystrokes and increases measurement reproducibility and efficiency.



Advanced applications for improved clinical decisions

ACUSON Redwood offers a comprehensive suite of advanced applications for early detection, diagnosis, and timely treatment.

Assess myocardial motion and mechanics with Global Longitudinal Strain (GLS), Global Radial Strain (GRS), and Global Circumferential Strain (GCS) using *syngo* VVI.

Stress Echo supports six user-definable factory default protocols and allows for prospective, retrospective and continuous image acquisition.

Optimally assess left ventricular function with Left Ventricular Opacification (LVO) improving tissue suppression, contrast visualization and contrast duration.

At Siemens Healthineers, we pioneer breakthroughs in healthcare. For everyone. Everywhere. By constantly bringing breakthrough innovations to market, we enable healthcare professionals to deliver high-quality care, leading to the best possible outcome for patients.

Our portfolio, spanning from in-vitro and in-vivo diagnostics to image-guided therapy and innovative cancer care, is crucial for clinical decision-making and treatment pathways. With our strengths in patient twinning, precision therapy, as well as digital, data, and artificial intelligence (AI), we are well positioned to take on the biggest challenges in healthcare. We will continue to build on these strengths to help fight the world's most threatening diseases, improving the quality of outcomes, and enabling access to care.

We are a team of 66,000 highly dedicated employees across more than 70 countries passionately pushing the boundaries of what's possible in healthcare to help improve people's lives around the world.

The products/features mentioned in this document may not be commercially available in all countries. Due to regulatory reasons their future availability cannot be guaranteed. Please contact your local Siemens Healthineers organization for further details. Stand-alone clinical images may have been cropped to better visualize pathology.

ACUSON Redwood, eSie Left Heart, eSie Measure and Velocity Vector Imaging technology (VVI) are trademarks of Siemens Medical Solutions USA, Inc.

syngo® is a registered trademark owned by Siemens Healthcare GmbH.

CV Edition refers to a configuration that combines available cardiovascular options on the ACUSON Redwood ultrasound system.

Endnotes:

¹ AI-powered measurement tools consist of software applications leveraging machine learning-based Artificial Intelligence to achieve the intended outcome including eSie Measure and eSie Left Heart.

Siemens Healthineers Headquarters

Siemens Healthcare GmbH
Henkestr. 127
91052 Erlangen, Germany
Phone: +49 9131 84-0
siemens-healthineers.com

Manufacturer

Siemens Medical Solutions USA, Inc.
Ultrasound
22010 S.E. 51st Street
Issaquah, WA 98029, USA
Phone: 1-888-826-9702
siemens-healthineers.com/ultrasound