

DEFIGARD 5000

The all new, user-friendly Defibrillator/Monitor The gentle art of Resuscitation with precision monitoring!

The DEFIGARD 5000 features *Multipulse Biowave*[®], the effective and myocardium saving, biphasic energy waveform.

With AED and manual mode the DEFIGARD 5000 is the best device for all cardiac arrest situations, using either adhesive pads, external paddles or internal spoons. The DEFIGARD 5000 has an external pacemaker and monitoring parameters ECG, SPO₂ and NIBP, which ensure continuous care for any patient. The DEFIGARD 5000 is fast and user-friendly with either direct soft key or control knob entry into all monitoring functions. The DEFIGARD 5000 with all accessories have been specifically designed for adult and paediatric use.



The DEFIGARD 5000 is ideal for hospital use:

- Manual mode for clinically trained personnel
- AED mode for first responder and all persons with basic BLS skills

A comprehensive range of advanced features

Defibrillation using the low energy *Multipulse Biowave*[®]:

- AED mode with adhesive pads:
 - Adult 90, 130, 150 J
 - Paediatric 15, 30, 50 J
- The whole defibrillation process is guided by audible and visual instructions displayed on a large colour screen.
- Manual over ride for AED and manual paddles, selectable 2 to 180 J
- Internal defibrillation selectable 2 to 30 J

Monitoring:

- Large 10.4" colour LCD screen
- Displays: AED prompts, measurements and waveforms for SPO₂, NIBP and up to 12 leads of ECG

Printer:

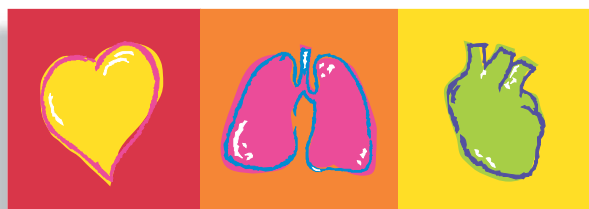
- Integrated 3 channel printer
- Automatic and manual operation for all waveforms, measurements, events, trends and alarms

Data Saving:

- The DEFIGARD 5000 has an internal memory allowing storage for 30 minutes of ECG and 500 events in AED mode, also 24 hour trends both graphical and tabular for all parameters
- Data can be printed or downloaded via the USB port using a memory stick

Communication:

- Easy transmission of 12 lead ECG via GSM or standard modem connected to the rear of DEFIGARD 5000
- Ethernet connection for software upgrades.



SCHILLER

www.schiller.ch

The Art of Diagnostics

Technical Data DEFIGARD 5000:

Defibrillator:

Energy levels:

- **AED:** Adults: 90, 130, 150 J; Paediatric: 15, 30, 50 J (configurable)
- **Paddles:** 2, 4, 8, 15, 30, 50, 90, 130, 180 J
- **Pads:** 2, 4, 6, 8, 15, 30, 50, 70, 90, 110, 130, 150, 180 J
- **Internal:** 2, 4, 6, 8, 15, 30 J
- **Waveform:** Pulsed Biphasic at 5 kHz – *Multipulse Biowave*®
- **Charging time:** 8 seconds for 180 J with a full charged battery
- **Energy selection:** Automatic in AED mode, set wheel on paddles, two push buttons for internal defibrillation
- **Defibrillation mode:** Non-synchronized, synchronized via adhesive pads using measured ECG

External pacemaker:

Operating mode: Fix – Demand – Overdrive (Frequency *3)

Frequencies: 40 – 210 p/min

Current: 35 – 150 mA

Monitor:

Screen: LCD colour screen 10.4" (211.2 x 158.4 mm), adjustable contrast settings

Parameters displayed: Status bar + up to 12 ECG channels + Defi window displaying time number of shocks delivered, energy selected, operating mode, AED texts or pacemaker window + measurements (ECG, SpO₂, PNI) + functions keys

Curves displayed: ECG, SpO₂

Parameters displayed: HR, sys., dia., average, SpO₂

Trends: 24 hours, graphical and tabular for all parameters

Input: CF class patient cable 3, 4 or 10 leads

Leads: I, II, III, aVR, aVL, aVF, V1-V6 (according to the patient cable connected)

Band pass: 1 – 35 Hz or 1 – 150 Hz (according to the ECG source)

Measuring range: 30 – 300 bpm

Amplification ECG: 0.25, 0.5, 1, 2 cm/mV

Printer:

Thermal printer:

- **Paper:** Z format, width 72 mm
- **Number of channels:** 3
- **Chart print out speed:** 25, 50 mm/s
- **Operating mode:** Automatic or manual

Printout: Curves, measurements, events, trends, date and time, alarms, defibrillator test

Alarms:

System alarms: Monitor, defibrillator, battery charge, recorder and memory

Physiological alarms: ECG, NIBP, SpO₂

Technical alarms: All parameters

Power supply:

Main power supply: 100 V – 240 V, 50/60 Hz

DC external supply: 9 V – 48 V DC

Battery: One internal and one removable (option) - Type Li/ion 10.8 V 4.6 Ah

Charging time: 1 h (for 80 %)

Battery level control: Charging and discharging indication on screen

Memory:

Size: 30 minutes ECG, 30 minutes ambient noise (voice) and 500 events (duration, number of shocks, date and time of shock)

SpO₂ (Masimo):

On/Off by cable detection

Display range: - SpO₂: 1 % – 100 %
- ECG: 25 – 240 bpm

Resolution: - SpO₂: 0.1 %
- ECG: 1 bpm

NIBP:

Method: Oscillometric

Usage: Adults, Neonates

Measuring intervals in automatic mode: 1 – 90 min

Measuring range in Adults mode: SYS 30 – 255 mmHg, DIA 15 – 220 mmHg

Measuring range in neonates mode: SYS 30 – 135 mmHg, DIA 15 – 110 mmHg

Resolution: 1 mmHg, 1 bpm

Accuracy: +/- 3 mmHg and +/- 2 bpm

Communication:

Serial link: 12 leads ECG: phone transmission to SEMANET – "10 s. resting ECG"

Ethernet link: Software update

USB link: Memory stick (Read SAED memory, Read trends)

Analog: QRS trigger, 1 channel ECG, Remote alarm

Environmental conditions:

Galvanic Protection: BF type

Temperatures: -30 to 50° C (transport/storage)
0 to 50° C (operation)

Atmospheric pressure: 500 to 1060 hPa

Relative humidity: 30 to 95 % (no condensation)

Dimensions: 289 mm x 177 mm x 271 mm (h x w x d)

CE 0459

Technical data subject to change without notice.

Asia

SCHILLER Asia-Pacific

10 C, Jalan SS 3/33
Taman Universiti
47300 Petaling Jaya
Selangor, Malaysia
Phone +603 78 77 5336
Fax +603 78 77 5744
sales@schiller.com.my

Austria

SCHILLER Handelsgesellschaft mbH

Kampmüllerweg 24
A-4040 Linz
Phone +43 732 70 99-0
Fax +43 732 757 000
sales@schiller.at

C.I.S. & Russia

SCHILLER AG

Moscow Representative Office

Office 414, 1-st Yamskogo Poly a 15
125124 Moscow, Russia
Phone/Fax
+7 (095) 970 11 33,
+7 (095) 956 29 10
mail@schiller-ag.com
www.schiller-cis.com

France

SCHILLER Médical S.A.S.

4, rue Louis Pasteur
F-67162 Wissembourg/Cedex
Phone +33 3 88 63 36 00
Fax +33 3 88 94 12 82
info@schiller.fr

Germany

SCHILLER Medizintechnik GmbH

Rudolf-Diesel-Strasse 14
D-85521 Ottobrunn
Phone +49 89 62 99 81-0
Fax +49 89 609 50 90
info@schillermed.de

India

SCHILLER Healthcare India Pvt. Ltd.

D.C. Silk Mills Compound, 'A' Wing,
1st floor
5, Chunawala Estate, Kondivitta Lane
Andheri-Kurla Road, Andheri (E)
Mumbai - 400 059, India
Phone +91 22 826 35 20
Fax +91 22 826 35 25
schiller@vsnl.com

Spain

SCHILLER ESPAÑA, S.A.

Avenida Baviera, 12 - 14 Posterior
E-28028 Madrid
Phone +34 91 713 01 76
Fax +34 91 355 79 33
schiller@schiller-es.com

Switzerland

SCHILLER-Reomed AG

Riedstrasse 14
CH-8953 Dietikon
Phone +41 1 744 30 00
Fax +41 1 740 37 10
sales@schiller-reomed.ch

Turkey

SCHILLER TÜRKİYE

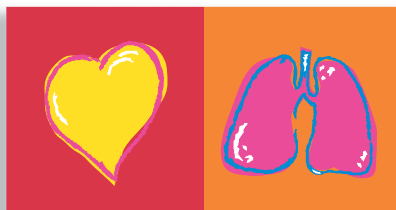
Halil Rifat Pasa Mah.
Darülaceze Cadd.
Perpa Ticaret Merkezi
B/Blok No: 41 K: 2
Okmeydani-Sisli – Istanbul
Phone +90 212 210 8681 (pbx)
Fax +90 212 210 8684
sales@schiller-turkiye.com

USA

SCHILLER America Inc.

11300 NW 41st Street
Miami, Florida 33178
Phone +1 786 845 06 20
Fax +1 786 845 06 02
sales@schilleramerica.com

Your specialist:



SCHILLER

w w w . s c h i l l e r . c h

The Art of Diagnostics

SCHILLER Médical S.A.S., 4, rue Louis Pasteur, F-67162 Wissembourg/Cedex, Phone +33 3 88 63 36 00, Fax +33 3 88 94 12 82, info@schiller.fr
Headquarters: SCHILLER AG, Altgasse 68, CH-6341 Baar, Switzerland, Phone +41 41 766 42 42, Fax +41 41 761 08 80, sales@schiller.ch